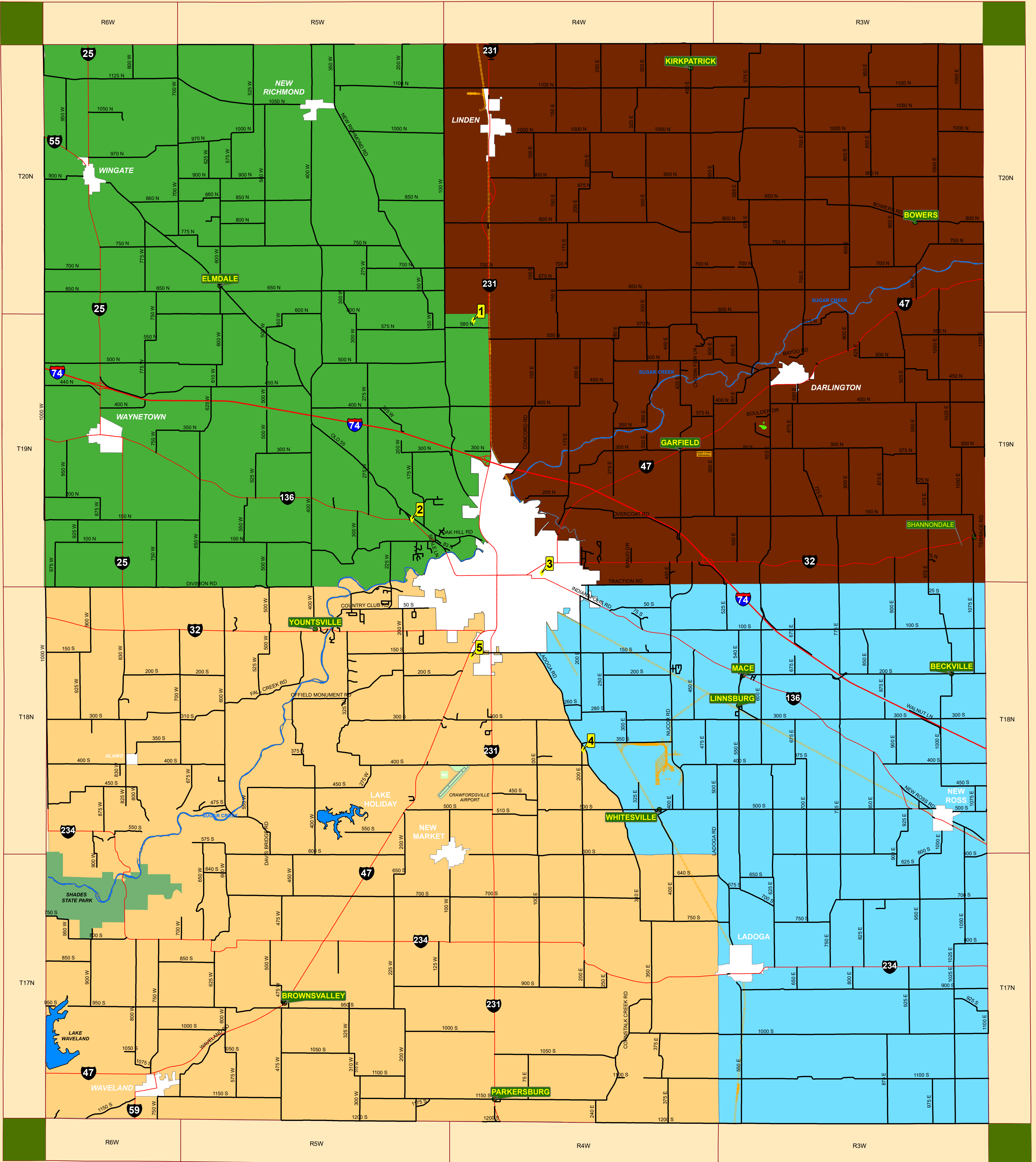


COUNTY COUNCIL VOTING DISTRICTS 2020



LEGEND

- INCORPORATED TOWNS
- UN-INCORPORATED TOWNS
- RAILROADS
- COUNTY ROADS
- HIGHWAYS

VOTING CENTERS

- NORTH MONTGOMERY HS - 5945 N HWY 231
- FRIENDSHIP BAPTIST CHURCH - 1981 W OAK HILL RD
- ST BERNARD CHURCH - 1306 E MAIN ST
- WHITESVILLE CHURCH - 3603 S LADOGA RD
- ROCKPOINT CHURCH - 429 W 150 S

CURRENT COUNCIL MEMBERS

- TOM MELLISH (R) - DISTRICT 1
- DON MILLS (R) - DISTRICT 2
- MARK SMITH (I) - DISTRICT 3
- MARK DAVIDSON (R) - DISTRICT 4
- GARY BOOTH (R) - AT LARGE
- GREG MORRISON (R) - AT LARGE
- TERRI HOCKERSMITH (R) - AT LARGE

